



HANNspree

HG324QJB (HSG1381)
LCD Monitor

User's Manual

HANNspree INC.
www.hannspree.com

Before operating the monitor, please read this manual thoroughly. This manual should be retained for future reference.

FCC Class B Radio Frequency Interference Statement

This equipment has been tested and found to comply with the limits for a Class B digital device, pursuant to Part 15 of the FCC Rules. These limits are designed to provide reasonable protection against harmful interference in a residential installation. This equipment generates, uses and can radiate radio frequency energy, and if not installed and used in accordance with the instructions, may cause harmful interference to radio communications. However, there is no guarantee that interference will not occur in a particular installation. If this equipment does cause harmful interference to radio or television reception, which can be determined by turning the equipment off and on, the user is encouraged to try to correct the interference by one or more of the following measures:

- Reorient or relocate the receiving antenna.
- Increase the separation between the equipment and receiver.
- Connect the equipment into an outlet on a circuit different from that to which the receiver is connected.
- Consult the dealer or an experienced radio/TV technician for help.

The device complies with Parts 15 of the FCC Rule. Operation is subject to the following two conditions: (1) this device may not cause harmful interference; and (2) this device must accept any interference received, including interference that may cause undesired operations.

CANADA

This Class B digital apparatus meets all requirements of the Canadian Interference-Causing Equipment Regulation.

【Optional, depend on selected model】



This device complies with requirement of EMC directive 2014/30/EU with regard to Electromagnetic Compatibility, and 2014/35/EU and 93/68/EEC with regard to Low Voltage directive.

【Optional, depend on selected model】

Socket-outlet shall be near the equipment and shall be accessible.

Trademark Notice:



HANNspree products incorporate High-Definition Multimedia Interface (HDMI™) technology.

The terms HDMI and HDMI High-Definition Multimedia Interface, and the HDMI Logo are trademarks or registered trademarks of HDMI Licensing LLC in the United States and other countries.

RECYCLING INFORMATION

We, the **HANNspree** care very much about our environment protection strategy and firmly believe that it helps us have healthier earth via appropriate treatment and recycling of industrial technology devices at the end-of-life.

These devices contain recyclable materials, which can be re-decomposed and re-integrated into brand-new marvels. On the contrary, other material can be classified to hazardous and poisoned substances. We strongly encourage you to contact the provided information to recycle this product.

For more information, please visit

<http://www.hannspree.eu/>

TABLE OF CONTENTS

SAFETY NOTICE	5
PRECAUTIONS.....	5
SPECIAL NOTES ON LCD MONITORS	6
BEFORE YOU OPERATE THE MONITOR	7
FEATURES.....	7
CHECKING THE CONTENTS OF THE PACKAGE	7
INSTALLATION INSTRUCTIONS	8
POWER.....	8
MAKING CONNECTIONS.....	10
ADJUSTING THE VIEWING ANGLE.....	11
OPERATING INSTRUCTIONS	12
GENERAL INSTRUCTIONS.....	12
FRONT PANEL CONTROL	13
HOW TO ADJUST A SETTINGS	14
PLUG AND PLAY.....	17
TECHNICAL SUPPORT (FAQ)	18
Q & A FOR GENERAL PROBLEMS	18
ERROR MESSAGE & POSSIBLE SOLUTIONS	20
APPENDIX	22
SPECIFICATIONS.....	22

SAFETY NOTICE

1. The changes or modifications not expressly approved by the party responsible for compliance could void the user's authority to operate the equipment.
2. Shielded interface cables and AC power cord, if any, must be used in order to comply with the emission limits.
3. The manufacturer is not responsible for any radio or TV interference caused by unauthorized modification to this equipment. It is the responsibilities of the user to correct such interference.
4. Only use attachments/accessories specified by the manufacturer.

WARNING:

To prevent fire or shock hazard, do not expose the monitor to rain or moisture. Dangerously high voltages are present inside the monitor. Do not open the cabinet. Refer servicing to qualified personnel only.

PRECAUTIONS

- Do not use the monitor near water, e.g. near a bathtub, washbowl, kitchen sink, laundry tub, swimming pool or in a wet basement.
- Do not place the monitor on an unstable cart, stand, or table. If the monitor falls, it can injure a person and cause serious damage to the appliance. Use only a cart or stand recommended by the manufacturer or sold with the monitor. If you mount the monitor on a wall or shelf, use a mounting kit approved by the manufacturer and follow the kit instructions.
- Slots and openings in the back and bottom of the cabinet are provided for ventilation. To ensure reliable operation of the monitor and to protect it from overheating, be sure these openings are not blocked or covered. Do not place the monitor on a bed, sofa, rug, or similar surface. Do not place the monitor near or over a radiator or heat register. Do not place the monitor in a bookcase or cabinet unless proper ventilation is provided.
- The monitor should be operated only from the type of power source indicated on the label. If you are not sure of the type of power supplied to your home, consult your dealer or local power company.
- Unplug the unit during a lightning storm or when it will not be used for long period of time. This will protect the monitor from damage due to power surges.
- Do not overload power strips and extension cords. Overloading can result in fire or electric shock.
- Never push any object into the slot on the monitor cabinet. It could short circuit parts causing a fire or electric shock. Never spill liquids on the monitor.
- Do not attempt to service the monitor by yourself; opening or removing covers can expose you to dangerous voltages and other hazards. Please refer all servicing to qualified service personnel.
- The wall socket shall be installed near the equipment and shall be easily accessible.

SPECIAL NOTES ON LCD MONITORS

The following symptoms are normal with LCD monitor and do not indicate a problem.

- Due to the nature of the fluorescent light, the screen may flicker during initial use. Turn off the Power Switch and then turn it on again to make sure the flicker disappears.
- You may find slightly uneven brightness on the screen depending on the desktop pattern you use.
- The LCD screen has effective pixels of 99.99% or more. It may include blemishes of 0.01% or less such as a missing pixel or a pixel lit all of the time.
- Due to the nature of the LCD screen, an afterimage of the previous screen may remain after switching the image, when the same image is displayed for hours. In this case, the screen is recovered slowly by changing the image or turning off the Power Switch for hours.
- If the screen suddenly flashes erratically or the backlighting fails, please contact your dealer or service center for repair. Do not attempt to repair the monitor yourself.

BEFORE YOU OPERATE THE MONITOR

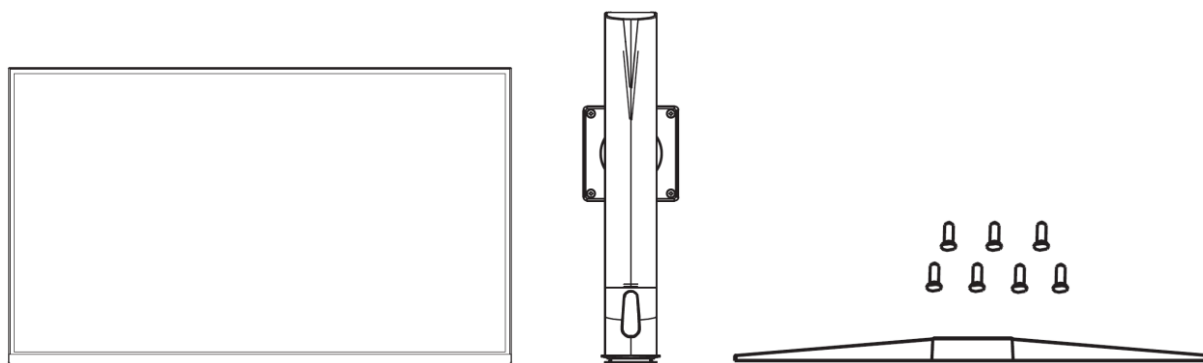
FEATURES

- 80cm /31.5" Wide Screen W-LED Backlight Monitor
- Resolution 2560 x 1440 pixels
- Ergonomic Design
- Space Saving, Compact Case Design

CHECKING THE CONTENTS OF THE PACKAGE

The product package should include the following items:

LCD Monitor



Cables and User manual



Quick Start Guide



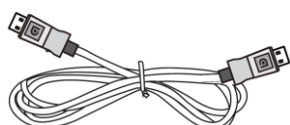
Warranty Card



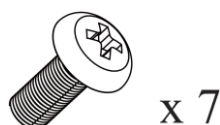
EUR Energy Label



Power Cord



DP Cable



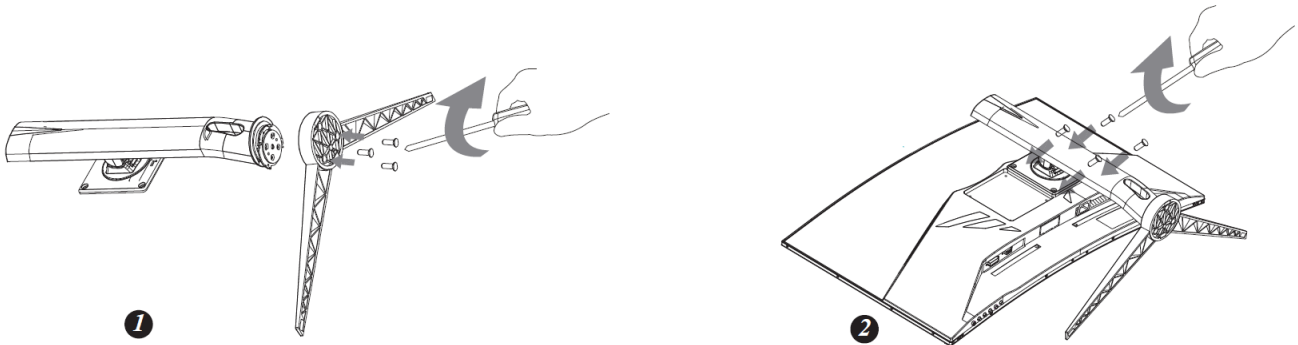
Screws



Screwdriver

INSTALLATION INSTRUCTIONS

INSTALL



REMOVE

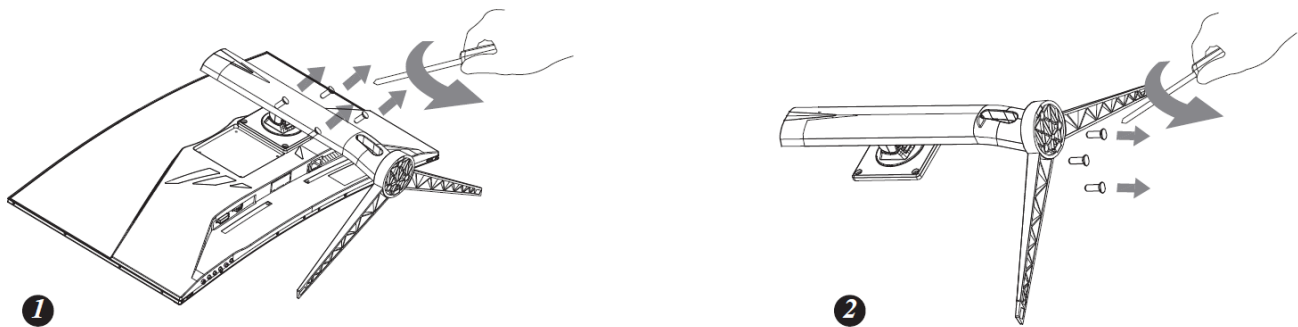


Figure.1. Installing and Removing the Base

INSTALLATION:

1. Align the Arm with the opening in the base.
2. Install the Arm on the base with 3 screws.
3. Install the Arm on Monitor with 4 screws.
4. Pendant snaps on the Arm and gently press down

REMOVAL:

1. Lift the pendant up
2. Remove the screws so that the stand base can be removed
3. Gently pull the stand base from the monitor until they are unattached.
4. Remove the screws, then gently remove the stand base.

Warm prompt: Place the Monitor face down on a soft and flat surface (blanket, foam, cloth, etc) to Monitor while install and remove.

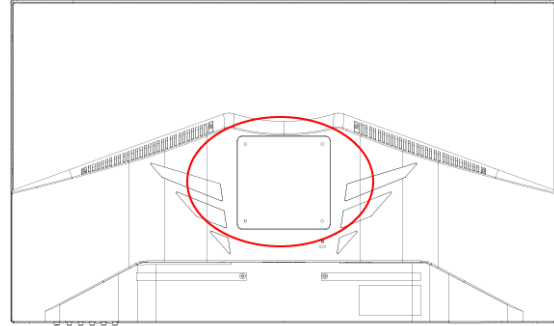
POWER

POWER SOURCE:

1. Make sure that the power cord is the correct type required in your area.
2. This LCD monitor has an Internal universal power supply that allows operation in either 100/120V AC or 220/240V AC voltage area (No user adjustment is required.)
3. Connect the AC-power cord one end to your LCD monitor's AC-input socket, the other end to wall-outlet.

WALL MOUNTING THE MONITOR:

1. Purchase a VESA compatible wall bracket:
VESA 115×115, 4 holes, M4, 10mm, 8kg.
2. Locate your ideal Monitor position on the wall.
3. Fix the wall bracket firmly on the wall.
4. Secure the Monitor to the bracket using the 4 mount holes on the back and center of the Monitor.



Note:

- Please read the instructions of your specific wall bracket to properly wall mount the Monitor.
- The pitch of the mounting holes is 100mm horizontally and 100mm vertically.
- The screws type required is metric: M4, 8mm length.
- The Monitor stand base can be screwed on a table or a hard surface using the hole on the back of the stand base.
- For use only with UL listed wall mount bracket.

**Installing the LCD Monitor requires special skill that should only be performed by qualified service personnel. Customers should not attempt to do the work themselves. HANNspree bears no responsibility for improper mounting or mounting that results in accident or injury. You can ask a qualified service personnel about using an optional bracket to mount the Monitor to the wall.*

MAKING CONNECTIONS

CONNECTING TO A PC

Turn off your computer before performing the procedure below.

1. Connect one end of the HDMI cable (optional) to the back of the monitor and connect the other end to the computer's HDMI port.
2. Connect one end of the DP cable to the back of the monitor and connect the other end to the computer's DP port.
3. Connect one end of the Mini DP cable to the back of the monitor and connect the other end to the computer's Mini DP port.
4. Connect the audio cable between the monitor audio output and the Speakers or Earphone.
5. Turn on your monitor and computer.

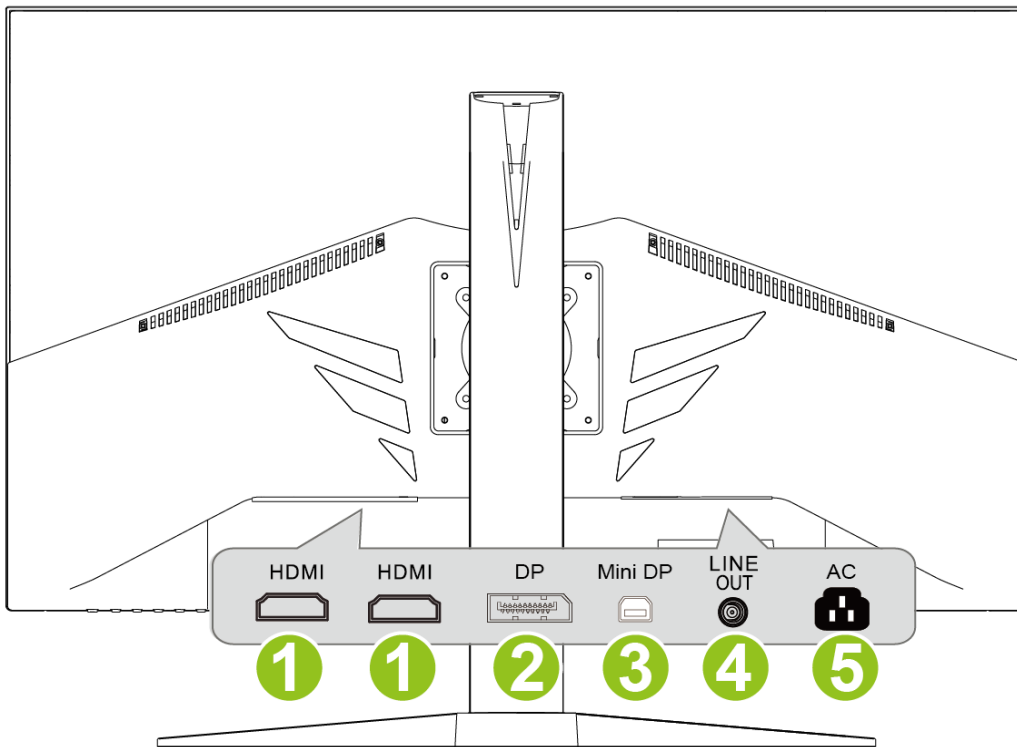


Figure.2. Connecting to a PC

1	HDMI Input	2	DP Input
3	Mini DP Input	4	LINE OUT
5	Power AC Input		

ADJUSTING THE VIEWING ANGLE

- For optimal viewing it is recommended to look at the full face of the monitor, then adjust the monitor's angle to your own preference.
- Hold the stand so you do not topple the monitor when you change the monitor's angle.
- You can adjust the monitor's angle from -5° to 15° .
- You are able to adjust the monitor Height 135mm
- You are able to adjust the monitor 45° for left and right

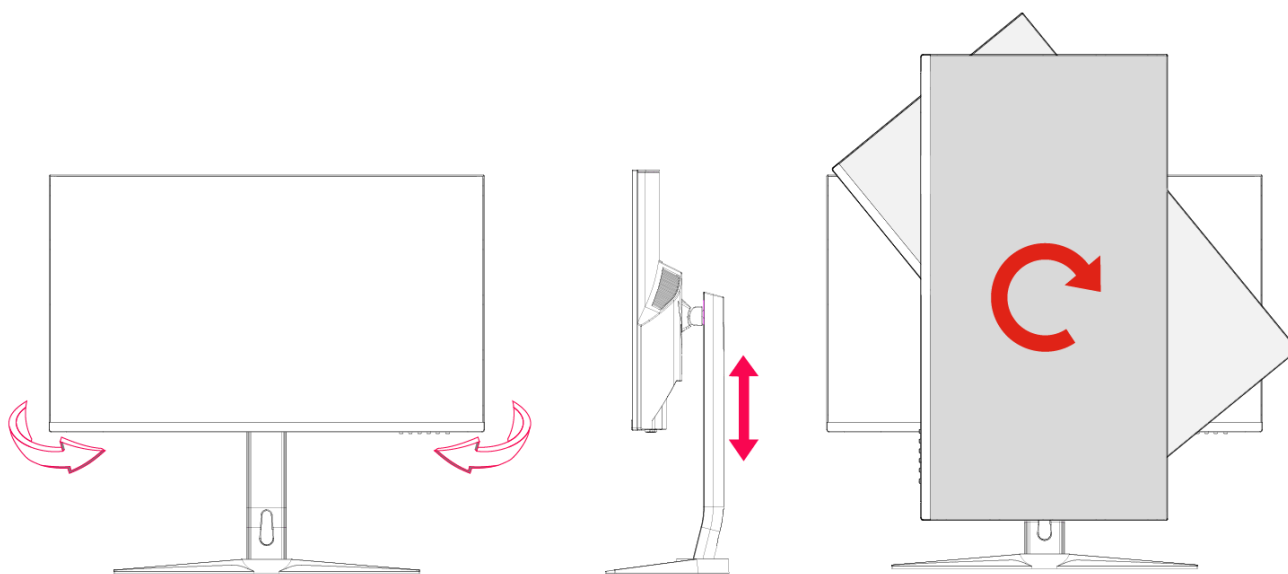


Figure.3. Monitor Angle

NOTES:

- Do not touch the LCD screen when you change the angle. It may cause damage or break the LCD screen.
- Be careful not to place fingers or hands near the hinges when tilting the monitor, otherwise pinching can result.

OPERATING INSTRUCTIONS

GENERAL INSTRUCTIONS

Press the power button to turn the monitor on or off. The other control buttons are located on the rear panel of the monitor (See Figure 4). By changing these settings, the picture can be adjusted to your personal preferences.

- The power cord should be connected.
- Connect the Signal cable from the monitor to the VGA card.
- Press the power button to turn on the monitor. The power indicator will light up.

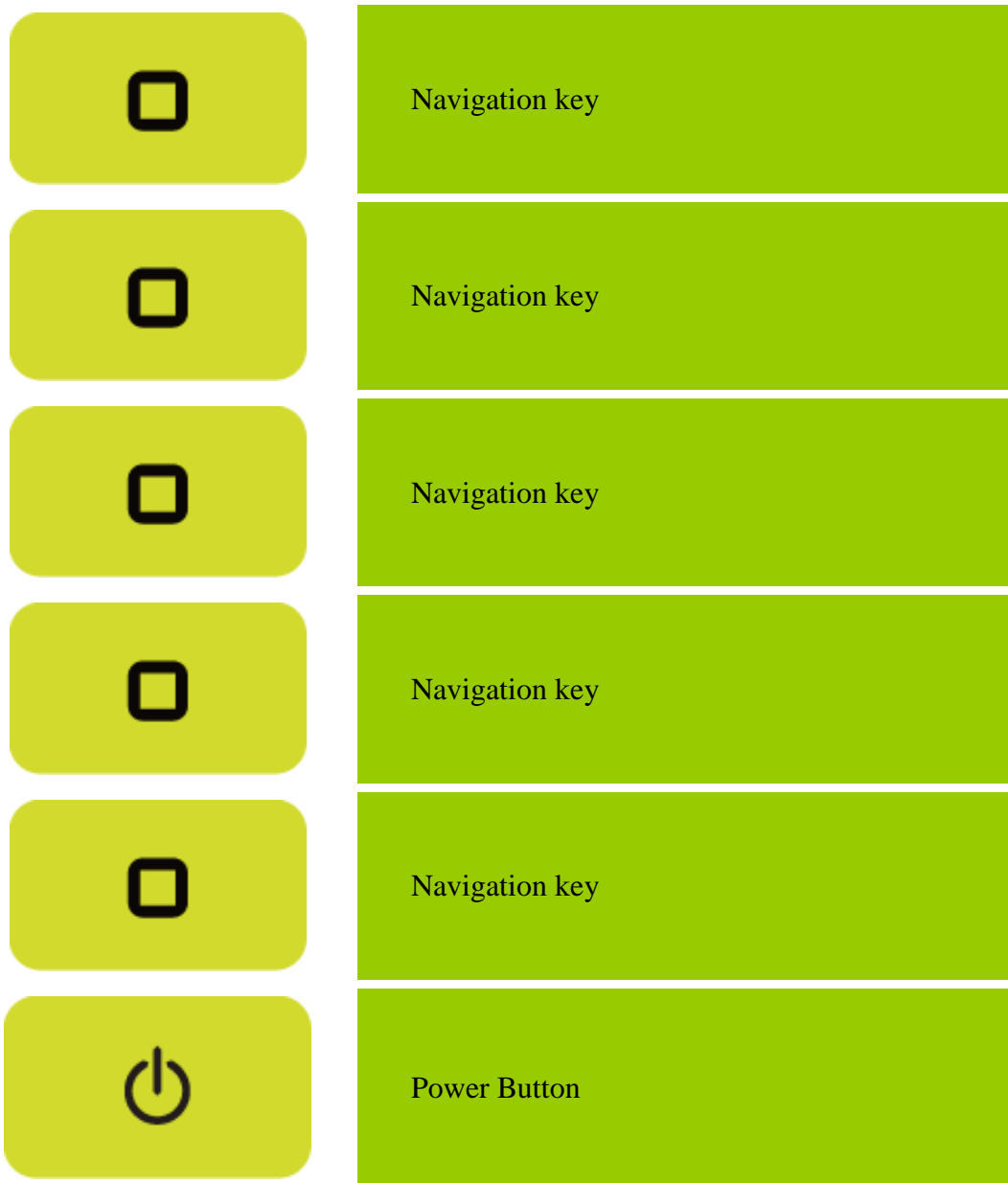


Figure.4. Control Panel Buttons

FRONT PANEL CONTROL

- **Power Button:**








Press this button to switch ON/OFF of monitor's power.

- **Power Indicator:**

Blue — Power On mode.

Amber — Power Saving mode.

•The OSD Menu and OSD Quick-Menu Symbol explanations and their functional uses are stated below.

	Activation symbol to turn the various modes on when operating the menu system.
	Activation symbol to exit, go back or deactivate the desired function that is selected.
	Toggle the selected options up and down the icon.
	Symbol used to go back or revert back to the previously selected menu.
	Left and right icons toggle your selected choice horizontally.
	Main menu icon that allows users access the main menu. Hold down the icon for a few seconds to turn off the main menu.
	Adjust the Contrast/Brightness.

NOTES:

- Do not install the monitor in a location near heat sources such as radiators or air dusts, or in a place subject to direct sunlight, or excessive dust or mechanical vibration or shock.
- Save the original shipping box and packing materials, as they will come in handy if you ever have to ship your monitor.
- For maximum protection, repackage your monitor as it was originally packed at the factory.
- To keep the monitor looking new, periodically clean it with a soft cloth. Stubborn stains may be removed with a cloth lightly dampened with a mild detergent solution. Never use strong solvents such as thinner, benzene, or abrasive cleaners, since these will damage the cabinet. As a safety precaution, always unplug the monitor before cleaning it.

HOW TO ADJUST A SETTINGS

INPUT SELECT	
MINIDP DISPLAYPORT HDMI2 HDMI1	Select the 「INPUT SELECT」 option to switch signals MiniDP, DisplayPort, HDMI2, or HDMI1.
AUDIO ADJUST	
VOLUME	Select the 「VOLUME」 option to change the volume level. Enter the option and adjust the level. [This function applies only to models with incorporated audio.] ● By high volume, risk of hearing damage exists.
MUTE	Select the 「MUTE」 option to switch the function On or Off. [The availability of this function depends upon the selected model. Adjusting the volume while muted cancels Mute mode.]
VIEW MODE	
(STANDARD)	
LOW INPUT LAG	Select the 「LOW INPUT LAG」 option to switch the function On or Off.
BLACK STABILIZATION	Select the 「BLACK STABILIZATION」 option to adjust the Black Stabilization of the display. Set the value from 0 to 100.
ADVANCED CONTRAST	Select the 「ADVANCED CONTRAST」 option to adjust the Advanced Contrast of the display. Set the value from 0 to 100.
RESPONSE TIME	Setup the display response time through the Response time function. Available settings are Standard, Advanced, and Ultra Fast. [This feature is limited to specific models only.]
RECALL	Resets the Standard monitor settings.
(GAME)	
GAMER 1/ GAMER 2/ GAMER 3	
LOW INPUT LAG	Select the 「LOW INPUT LAG」 option to switch the function On or Off.
BLACK STABILIZATION	Select the 「BLACK STABILIZATION」 option to adjust the Black Stabilization of the display. Set the value from 0 to 100.
ADVANCED CONTRAST	Select the 「ADVANCED CONTRAST」 option to adjust the Advanced Contrast of the display. Set the value from 0 to 100.
RESPONSE TIME	Setup the display response time through the Response time function. Available settings are Standard, Advanced, and Ultra

	Fast. [This feature is limited to specific models only.]
RENAME	Adjust the Rename value of the display according to your preference. Select 「RENAME」 option to adjust the value.
RECALL	Resets the GAMER 1/ GAMER 2/ GAMER 3 monitor settings.
FPS1/FPS2/RTS/MOBA	Select the mode according to your preference: FPS1/FPS2/RTS/MOBA .
MOVIE/WEB/TEXT	Select the mode according to your preference: Movie/ Web/ Text.
COLOR ADJUST	
CONTRAST	Adjust the contrast value of the display according to your preference. Select 「CONTRAST」 option to adjust the contrast value.
BRIGHTNESS	Adjust the brightness value of the display according to your preference. Select 「BRIGHTNESS」 option to adjust the brightness value.
COLOR TEMPERATURE	Adjust the color temperature value of the display according to your preference: sRGB/Bluish/Cool/Native/Warm/User Color/Low Blue Enable/ Low Blue Adjust.
COLOR SPACE	Adjust the Color Space value of the display according to your preference:Auto/RGB Mode/YUV Mode.
COLOR RANGE	Adjust the Color Range value of the display according to your preference:Auto/Full Range/Limited Range .
MANUAL IMAGE ADJUST	
SHARPNESS	Select the「Sharpness」option to adjust the sharpness of the display. Set the value from 0 to 100.
ASPECT RATIO	When the aspect ratio of screen is distorted, you may make adjustments by using this function. 「FULL SCREEN」 indicates full screen display, which does not ensure the image is shown as is or in initial scale. 「✓」 indicates scaling by the proportion of original images, which may cause the screen showing black bands.
OVERSCAN	Select the 「OVERSCAN」 option to the function On or Off.
SETUP MENU	
LANGUAGE SELECT	Select 「Language」 option to change the language of the OSD. Enter the option and select a language. [Reference only, the OSD Language depends on the selected model]
AMD FREESYNC	Select the 「AMD FREESYNC」 option to the function On or Off.

RESOLUTION NOTICE	Select the 「RESOLUTION NOTICE」 option to the function On or Off.
INFORMATION	Display Horizontal frequency/Vertical frequency/Resolution information.
OSD TIMEOUT	Select 「OSD TIME-OUT」 option to set the OSD time out from 5 to 60 seconds. Enter the option and adjust the level.
OSD BACKGROUND	Select the 「OSD BACKGROUND」 option to the function On or Off.
POWER INDICATOR	Select the 「POWER INDICATOR」 option to the function On or Off.
RAMPAGEX	Adjust the Rampagex value of the display according to your preference:Red/Green/Blue/Auto/Off .
AUTO POWER OFF	Select the 「AUTO POWER OFF」 option to the function On or Off.
SLEEP	Adjust the sleep mode value of the display according to your preference .
ECO MODE	Adjust the ECO Mode value of the display according to your preference: Standard/Optimize/Conserve.
DDC/CI	Select the 「DDC/CI」 option to switch the function On or Off.
MEMORY RECALL	Select the 「MEMORY RECALL」 option to reset to the monitor's factory setting.

PLUG AND PLAY

Plug & Play DDC2B Feature

This monitor is equipped with VESA DDC2B capabilities according to the VESA DDC STANDARD. It allows the monitor to inform the host system of its identity and, depending on the level of DDC used, communicate additional information about its display capabilities. The DDC2B is a bidirectional data channel based on the I²C protocol. The host can request EDID information over the DDC2B channel.

THIS MONITOR WILL APPEAR TO BE NON-FUNCTIONAL IF THERE IS NO VIDEO INPUT SIGNAL. IN ORDER FOR THIS MONITOR TO OPERATE PROPERLY, THERE MUST BE A VIDEO INPUT SIGNAL.

TECHNICAL SUPPORT (FAQ)

Q & A FOR GENERAL PROBLEMS

PROBLEM & QUESTION	POSSIBLE SOLUTION
Power LED is not on	<ul style="list-style-type: none"> *Check if the Power Switch is in the ON position. *Power Cord should be connected.
No Plug & Play	<ul style="list-style-type: none"> *Check if the PC system is Plug & Play compatible. *Check if the Video Card is Plug & Play compatible. *Check if any plug pins on the DP or HDMI connector are bent.
The display is too dark or too bright.	<ul style="list-style-type: none"> *Adjust the Contrast and Brightness Controls.
Picture bounces or a wave pattern is present in the picture	<ul style="list-style-type: none"> *Move electrical devices that may cause electrical interference.
The power LED is ON (Amber) but there's no video or no picture.	<ul style="list-style-type: none"> *Computer Power Switch should be in the ON position. *Computer Video Card should be snugly seated in its slot. *Make sure monitor's video cable is properly connected to the computer. *Inspect monitor's video cable and make sure none of the pins are bent. *Make sure computer is operational by hitting the CAPS LOCK key on the keyboard while observing the CAPS LOCK LED. The LED should either turn ON or OFF after hitting the CAPS LOCK key.
Missing one of the primary colors (RED, GREEN, or BLUE)	<ul style="list-style-type: none"> *Inspect the monitor's video cable and make sure that none of the pins are bent.
Screen image is not centered or sized properly.	<ul style="list-style-type: none"> * Adjust pixel frequency CLOCK and PHASE or press hot-key (i Button).
Picture has color defects (White does not look white)	<ul style="list-style-type: none"> *Adjust RGB color or select color temperature.
The screen resolution needs to be adjusted	<ul style="list-style-type: none"> *Use win 2000/ME/XP Right click anywhere on desktop and select Properties>Settings>Screen Resolution. Use the silder to adjust the reslution and click Apply.

Addendum related to Windows 7 / Windows 8

When you encounter display problem under Windows 7/ Windows 8, you need to do the following:

1. Make sure your PC computer (Hardware requirement) can support Windows 7/ Windows 8.
2. Make sure your video card can run Windows 7/ Windows 8.
3. If your video card can support Windows 7/ Windows 8, need to install the latest Windows 7/ Windows 8 driver of your video card.

Suggest to do the following:

1. Install the latest Windows 7/ Windows 8 video driver of your video card.
2. Try to use the recommended display resolution that is supported by the monitor.
3. If the recommended display resolution is not working, try the second recommended display resolution.

	1	2
35,56cm / 14" (16:9)	1366×768@60Hz	1366×768@50Hz
39,6cm / 15.6" (16:9)	1366×768@60Hz	1366×768@75Hz
40,64cm / 16" (16:9)	1366×768@60Hz	1366×768@50Hz
43,2cm / 17" (16:10)	1440×900@60Hz	1440×900@75Hz
47cm / 18.5" (16:9)	1366×768@60Hz	1366×768@75Hz
48,3cm / 19" (5:4)	1280×1024@60Hz	1280×1024@75Hz
48,3cm / 19"(16:10)	1440×900@60Hz	1440×900@75Hz
51cm / 20" (16:9)	1600×900@60Hz	1600×900@50Hz
56cm / 22" (16:10)	1680×1050@60Hz	1680×1050@50Hz
54,6cm / 21.5" (16:9) 60cm / 23.6" (16:9) 60.45cm/23.8"(16:9) 62,5cm/ 24.6 (16:9)	1920×1080@60Hz	1920×1080@50Hz
68.6cm / 27" (16:9)	1920×1080@60Hz	1920×1080@50Hz
80cm/31.5"(16:9)	2560x1440@60Hz	2560x1440@75Hz

And if you still have display problem after doing the above procedure, please visit Hanns·G support and Service Website: <http://www.hannsree.eu/en/monitors>

Windows is a registered trademark of Microsoft Corporation.

ERROR MESSAGE & POSSIBLE SOLUTIONS

- **CABLE NOT CONNECTED:**
 1. Check that the signal-cable is properly connected, if the connector is loose, tighten the connector's screws.
 2. Check the signal-cable's connection pins for damage.

- **INPUT NOT SUPPORT :**
 Your computer has been set to unsuitable display mode, set the computer to display mode given in the following table.

FACTORY PRESET TIMING TABLE:

MODE	RESOLUTION	HORIZONTAL FREQUENCY (KHz)	VERTICAL FREQUENCY (Hz)
1	640×400 @70Hz	31.469	70.087
2	640×480 @60Hz	31.469	59.940
3	640×480 @70Hz	36.052	70.004
4	640×480 @67Hz	35.000	66.667
5	640×480 @72Hz	37.861	72.809
6	640×480 @75Hz	37.500	75.000
7	720×400 @70Hz	31.469	70.087
8	800×600 @56Hz	35.156	56.250
9	800×600 @60Hz	37.879	60.317
10	800×600 @72Hz	48.077	72.188
11	800×600 @75Hz	46.875	75.000
12	832×624 @75Hz	49.725	75.000
13	1024×768 @60Hz	48.363	60.004
14	1024×768 @70Hz	56.476	70.069
15	1024×768 @75Hz	60.023	75.029
16	1152×870 @75Hz	68.681	75.062
17	1152×864 @75Hz	67.500	75.000
18	1280×720 @60Hz	45.000	60.000
19	1280×960 @60Hz	60.000	60.000
20	1280×960 @75Hz	74.592	74.443
21	1280×768 @60Hz	47.776	59.870
22	1280×768 @75Hz	60.289	74.893
23	1280×1024 @60Hz	63.981	60.020
24	1280×1024 @75Hz	79.976	75.025
25	1360×768 @60Hz	47.712	60.015
26	1440×900 @60Hz	55.469	59.901
27	1440×900 @75Hz	70.635	74.984
28	1400×1050 @60Hz	64.744	59.948

29	1680×1050 @60Hz	65.290	59.954
30	1920×1080 @60Hz	67.500	60.000
31	2560×1440 @60Hz	88.787	59.951

APPENDIX

SPECIFICATIONS

LCD Panel	Driving system	TFT Color LCD
	Size	80cm /31.5" Diagonal
	Pixel pitch	0.0908(H) x 0.2724(V) mm
Video	H-Frequency	31KHz – 215KHz
	V-Frequency	56Hz – 144Hz
Display Colors		16.7M Colors
Max. Resolution		2560 x 1440 pixel / 144Hz
Plug & Play		VESA DDC2B™
Power consumption	ON Mode	45W (Typical)
	Power Saving Mode	≤0.5W
	OFF Mode	≤0.3W
Audio output		Rated Power 1.5 W rms (Per channel)
Input Terminal		HDMI DP Mini DP
Maximum Screen Size		Hor. : 697.344mm Ver. : 392.256mm
Power Source		100–240V , 50–60Hz
Environmental Considerations		Operating Temp:5 ° to 35 °C Storage Temp.: -20 ° to 60 °C Operating Humidity: 20% to 85%
Dimensions		711.2 (W)×649.9 (H)×199.2 (D) mm 28.0"(W)×25.6 "(H)×7.8"(D)
Weight (NW)		7.3 kg (16.1 lb)

*** The above specification is subject to actual product specification and is subject to change without prior notice.

NOTES:

The Maximum Resolution will depends on the display card supporting. Related issue can refer to <http://www.hannspree.eu/en/monitors>. FAQ section.